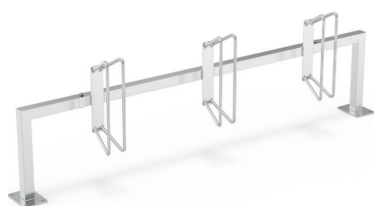
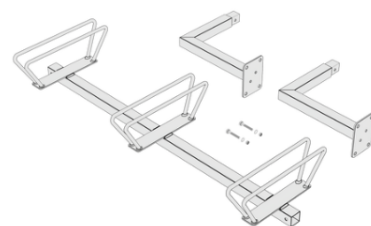


ASSEMBLY INSTRUCTION

Bike Rack Economy R80

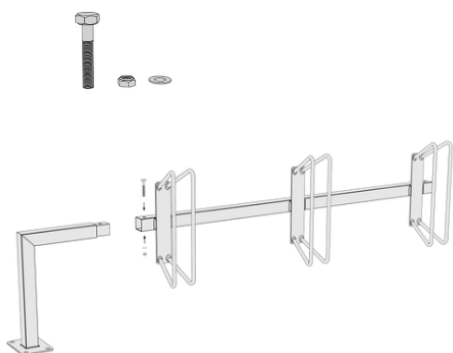


- Supplied parts for 3-bike parking.
- Extensions can be added for 6 or 9 bikes.

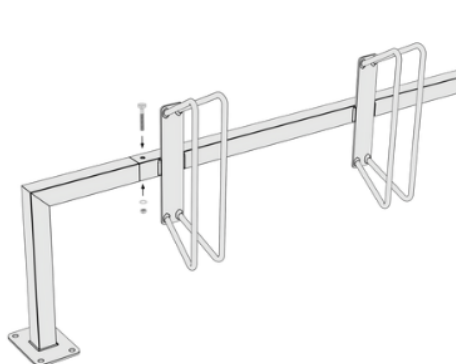


Follow these instructions to assemble your bike rack quickly and safely. Ensure all parts and tools are ready before starting.

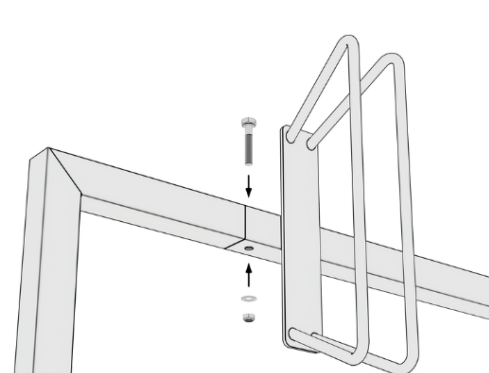
1



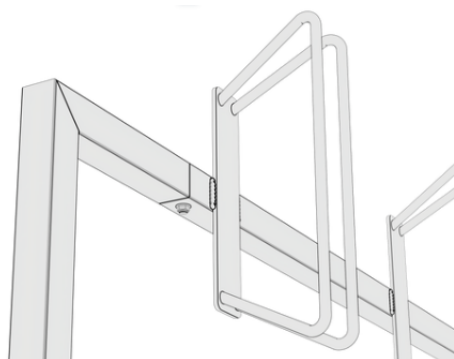
2



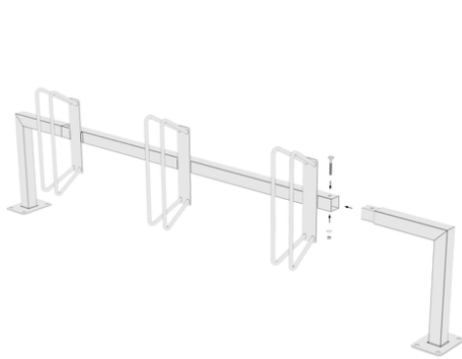
3



4

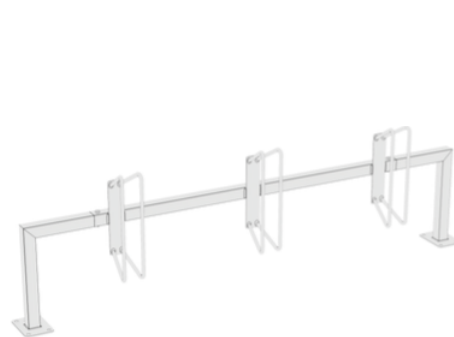


5



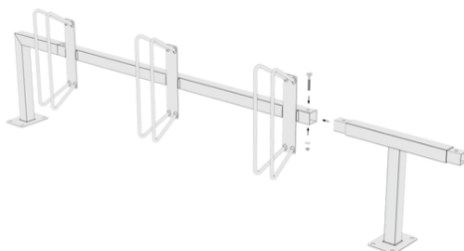
6

Bike rack with space for 3 bikes.

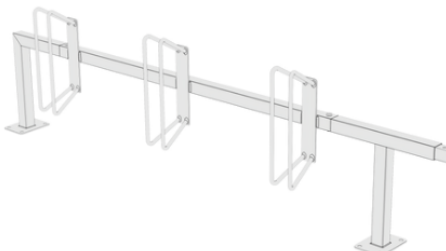


7

For 6 spaces, skip Steps 5–6 and add another frame section with a connector after Step 4.



8



9

Bike rack with space for 6 bikes.
For 9 spaces: repeat Steps 7–8 to add more frame sections and hoops, then fully tighten.

